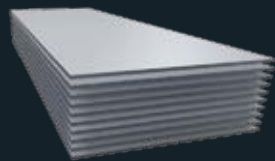


| Size (mm) | Weight per sheet (Kg) |
|--------------------|-----------------------|
| 2000 x 1000 x 0.5 | 2.71 |
| 2500 x 1250 x 0.5 | 4.23 |
| 2000 x 1000 x 0.6 | 3.25 |
| 2500 x 1250 x 0.6 | 5.08 |
| 2000 x 1000 x 0.7 | 3.83 |
| 2500 x 1250 x 0.7 | 5.99 |
| 2000 x 1000 x 0.8 | 4.34 |
| 2500 x 1250 x 0.8 | 6.78 |
| 2000 x 1000 x 1.0 | 5.42 |
| 2500 x 1250 x 1.0 | 8.47 |
| 3000 x 1250 x 1.0 | 10.20 |
| 2000 x 1000 x 1.2 | 6.50 |
| 2500 x 1250 x 1.2 | 10.20 |
| 3000 x 1250 x 1.2 | 12.20 |
| 3000 x 1500 x 1.2 | 14.60 |
| 2000 x 1000 x 1.5* | 8.13 |
| 2500 x 1000 x 1.5 | 10.16 |
| 2500 x 1250 x 1.5* | 12.70 |
| 2500 x 1500 x 1.5 | 15.24 |
| 3000 x 1000 x 1.5 | 12.20 |
| 3000 x 1250 x 1.5* | 15.20 |
| 3000 x 1500 x 1.5* | 18.30 |
| 3100 x 1000 x 1.5 | 12.60 |
| 3250 x 1250 x 1.5 | 16.51 |
| 3500 x 1250 x 1.5 | 17.78 |
| 4000 x 1250 x 1.5 | 20.53 |
| 3750 x 1250 x 1.5 | 19.05 |
| 4000 x 1500 x 1.5 | 24.39 |
| 2000 x 1000 x 2.0* | 10.80 |
| 2500 x 1000 x 2.0 | 13.55 |
| 2500 x 1250 x 2.0* | 16.90 |
| 2500 x 1500 x 2.0 | 20.33 |
| 2500 x 1600 x 2.0* | 21.68 |
| 2500 x 1750 x 2.0* | 23.71 |
| 3000 x 1000 x 2.0 | 16.30 |
| 3000 x 1250 x 2.0* | 20.30 |
| 3000 x 1400 x 2.0 | 22.76 |
| 3000 x 1500 x 2.0* | 24.40 |
| 3000 x 1600 x 2.0* | 26.02 |
| 3000 x 1750 x 2.0* | 28.46 |
| 3000 x 2000 x 2.0* | 32.52 |
| 3100 x 1250 x 2.0 | 21.00 |
| 3100 x 1500 x 2.0 | 25.20 |
| 3250 x 1250 x 2.0 | 22.02 |

| Size (mm) | Weight per sheet (Kg) |
|--------------------|-----------------------|
| 3250 x 1500 x 2.0 | 26.42 |
| 3500 x 1250 x 2.0 | 23.71 |
| 3500 x 1500 x 2.0 | 28.46 |
| 3750 x 1250 x 2.0 | 25.41 |
| 3750 x 1500 x 2.0 | 30.49 |
| 4000 x 1000 x 2.0* | 21.73 |
| 4000 x 1250 x 2.0* | 27.17 |
| 4000 x 1400 x 2.0 | 30.66 |
| 4000 x 1500 x 2.0* | 32.60 |
| 4000 x 1600 x 2.0* | 34.69 |
| 4000 x 1750 x 2.0* | 37.94 |
| 4000 x 2000 x 2.0* | 43.79 |
| 2000 x 1000 x 2.5* | 13.60 |
| 2500 x 1250 x 2.5* | 21.20 |
| 3000 x 1500 x 2.5* | 30.50 |
| 2000 x 1000 x 3.0* | 16.30 |
| 2500 x 1000 x 3.0 | 20.33 |
| 2500 x 1250 x 3.0* | 25.40 |
| 2500 x 1500 x 3.0 | 30.49 |
| 2500 x 1600 x 3.0* | 32.52 |
| 2500 x 1750 x 3.0* | 35.57 |
| 3000 x 1000 x 3.0 | 24.40 |
| 3000 x 1250 x 3.0* | 30.50 |
| 3000 x 1400 x 3.0 | 34.15 |
| 3000 x 1500 x 3.0* | 36.60 |
| 3000 x 1600 x 3.0* | 39.02 |
| 3000 x 1750 x 3.0* | 42.68 |
| 3000 x 2000 x 3.0* | 48.78 |
| 3100 x 1250 x 3.0 | 31.50 |
| 3100 x 1500 x 3.0 | 37.80 |
| 3250 x 1250 x 3.0 | 33.03 |
| 3250 x 1500 x 3.0 | 39.63 |
| 3500 x 1250 x 3.0 | 35.57 |
| 3500 x 1500 x 3.0 | 42.68 |
| 3750 x 1250 x 3.0 | 38.01 |
| 3750 x 1500 x 3.0 | 45.73 |
| 4000 x 1250 x 1.5 | 20.53 |
| 4000 x 1250 x 3.0* | 40.66 |
| 4000 x 1400 x 3.0 | 45.53 |
| 4000 x 1500 x 3.0* | 48.80 |
| 4000 x 1600 x 3.0* | 52.03 |
| 4000 x 1750 x 3.0* | 56.91 |
| 4000 x 2000 x 3.0* | 65.00 |



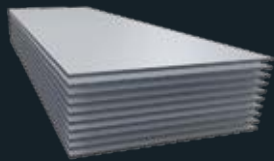
SHEET

Alloy 1050-H14

We have in-house facilities for Plastic Coating to suit your requirements

*Also stock coated one side.

aluminium rolled products



SHEET

Other alloys

| Size (mm) | Alloys – 5251-H22 | 3103-H14 | 6082-T651 | 5083-H111 |
|-------------------|-------------------|----------|-----------|-----------|
| 2000 x 1000 x 1.0 | ✓ | | | |
| 2500 x 1250 x 1.0 | ✓ | | | |
| 2000 x 1000 x 1.2 | ✓ | | | |
| 2500 x 1250 x 1.2 | ✓ | | | |
| 2000 x 1000 x 1.5 | ✓* | | | |
| 2500 x 1250 x 1.5 | ✓* | ✓ | | ✓ |
| 3000 x 1500 x 1.5 | ✓ | | | |
| 2000 x 1000 x 2.0 | ✓* | | | |
| 2500 x 1250 x 2.0 | ✓* | ✓ | ✓ | ✓ |
| 3000 x 1500 x 2.0 | ✓ | | | |
| 2000 x 1000 x 2.5 | ✓ | | | |
| 2500 x 1250 x 2.5 | ✓ | | | |
| 2000 x 1000 x 3.0 | ✓* | | | |
| 2500 x 1250 x 3.0 | ✓* | ✓ | ✓ | ✓ |
| 3000 x 1250 x 3.0 | | ✓ | | |
| 3000 x 1500 x 3.0 | ✓ | | | |

**Also stock coated one side*

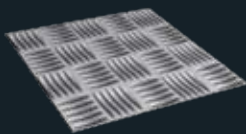


STUCCO SHEET

Alloy 1050-H14

| Size (mm) | Weight per sheet (Kg) |
|-------------------|-----------------------|
| 2000 x 1000 x 0.5 | 2.71 |
| 2500 x 1250 x 0.5 | 4.23 |
| 2000 x 1000 x 0.6 | 3.25 |
| 2500 x 1250 x 0.6 | 5.08 |
| 2000 x 1000 x 0.7 | 3.79 |

| Size (mm) | Weight per sheet (Kg) |
|-------------------|-----------------------|
| 2500 x 1250 x 0.7 | 5.99 |
| 2000 x 1000 x 0.8 | 4.34 |
| 2500 x 1250 x 0.8 | 6.78 |
| 2500 x 1250 x 1.0 | 8.47 |
| 2500 x 1250 x 1.2 | 10.20 |
| 3000 x 1250 x 0.9 | 9.24 |
| 3000 x 1500 x 0.9 | 11.09 |
| 3000 x 1250 x 1.2 | 12.32 |
| 3000 x 1500 x 1.2 | 14.78 |



5 BAR TREADPLATE

Alloy 5754-H114

| Size (mm) | Weight per sheet (Kg) |
|-------------------|-----------------------|
| 2500 x 1250 x 1.5 | 13.34 |
| 2438 x 1219 x 2.0 | 17.75 |
| 2500 x 1250 x 2.0 | 18.65 |
| 3000 x 1500 x 2.0 | 26.80 |
| 2000 x 1000 x 3.0 | 17.30 |
| 2438 x 1219 x 3.0 | 25.70 |
| 2500 x 1250 x 3.0 | 27.00 |

| Size (mm) | Weight per sheet (Kg) |
|-------------------|-----------------------|
| 3000 x 1500 x 3.0 | 38.85 |
| 2000 x 1000 x 4.5 | 25.02 |
| 2500 x 1250 x 4.5 | 39.5 |
| 3000 x 1500 x 4.5 | 56.29 |
| 2438 x 1219 x 6.0 | 49.15 |
| 2500 x 1250 x 6.0 | 51.65 |
| 3000 x 1500 x 6.0 | 74.30 |

| Product Code | Size (mm) | Approximate weight per plate (Kg) |
|--------------|-------------------|-----------------------------------|
| ATG15 | 2500 x 1250 x 1.5 | 13.88 |
| ATG20 | 2500 x 1250 x 2.0 | 18.13 |
| ATG30 | 2500 x 1250 x 3.0 | 26.10 |

We can split packs of SHATE & PLATE in grades 5083-0 & 6082-T6 White Painted

Type 1050

| Size (mm) (Kg) | Weight per sheet |
|-------------------|------------------|
| 2500 x 1250 x 0.9 | 7.62 |
| 2500 x 1250 x 1.2 | 10.20 |
| 2500 x 1250 x 1.5 | 12.78 |
| 2500 x 1250 x 2.0 | 15.50 |

| Size (mm) | Weight per sheet (Kg) |
|-------------------|-----------------------|
| 2500 x 1250 x 4.0 | 33.90 |
| 3000 x 1500 x 4.0 | 49.28 |
| 2500 x 1250 x 5.0 | 42.30 |
| 2000 x 1000 x 6.0 | 32.80 |
| 2500 x 1250 x 6.0 | 50.80 |
| 3000 x 1500 x 6.0 | 73.92 |

Type 6082

| Size (mm) | Weight per sheet (Kg) |
|-------------------|-----------------------|
| 2500 x 1250 x 4.0 | 33.90 |
| 2500 x 1250 x 5.0 | 42.30 |
| 2500 x 1250 x 6.0 | 50.80 |

Grade 5251

| Size (mm) | Weight per sheet (Kg) |
|-------------------|-----------------------|
| 2000 x 1000 x 4.0 | 21.60 |
| 2500 x 1250 x 4.0 | 33.70 |
| 3000 x 1500 x 4.0 | 48.60 |
| 2000 x 1000 x 5.0 | 27.00 |
| 2500 x 1250 x 5.0 | 42.10 |
| 3000 x 1500 x 5.0 | 60.70 |
| 2000 x 1000 x 6.0 | 32.40 |
| 2500 x 1250 x 6.0 | 50.60 |
| 3000 x 1500 x 6.0 | 72.90 |

5083-0/H111

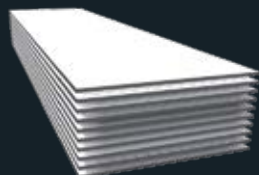
| Size (mm) (kg) | Weight per plate |
|-------------------|------------------|
| 2500 x 1250 x 4.0 | 33.90 |
| 2500 x 1250 x 5.0 | 42.34 |
| 2500 x 1250 x 6.0 | 50.78 |

| Size (mm) | Weight per plate (kg) | 5083-0 | 6082-T651 |
|--------------------|-----------------------|--------|-----------|
| 2500 x 1250 x 8.0 | 67.81 | ✓ | ✓ |
| 2500 x 1250 x 10.0 | 84.68 | ✓ | ✓ |
| 2500 x 1250 x 12.0 | 101.56 | ✓ | ✓ |
| 2500 x 1250 x 15.0 | 127.18 | ✓ | |
| 2500 x 1250 x 20.0 | 169.37 | ✓ | |
| 2500 x 1250 x 25.0 | 211.77 | ✓ | |



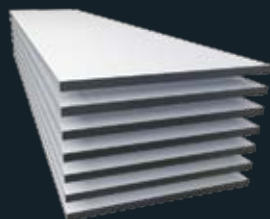
TRIPLEGRIP (ATG)

Aluminium Treadplate
Alloy 5052H32

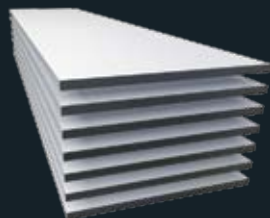


SHEET –

White Painted
3105/3003-H46(H44)



SHATE



PLATE

Alloys 6082-T651
5083-0
6082-T6

Weights

All weights shown in this publication are for guidance only. They are calculated using nominal dimensions and are scientifically recognised densities. Please note that in practice, the actual weight can vary significantly from the theoretical weight due to variations in manufacturing tolerances and compositions.

The information contained herein is based on our present knowledge and experience and is given in good faith. However, no liability will be accepted by the Company in respect of any action taken by any third party in reliance thereon.

As the products detailed herein may be used for a wide variety of purposes and as the Company has no control over their use, the Company specifically excludes all conditions and warranties expressed or implied by statute or otherwise as to dimensions, properties and/or their fitness for any particular purpose. Any advice given by the Company to any third party is given for that party's assistance only and without any liability on the part of the Company.

Any contract between the Company and the customer will be subject to the Company's Conditions of Sale. The extent of the Company's liabilities to any customer is clearly set out in those Conditions; a copy of which is available on request.

